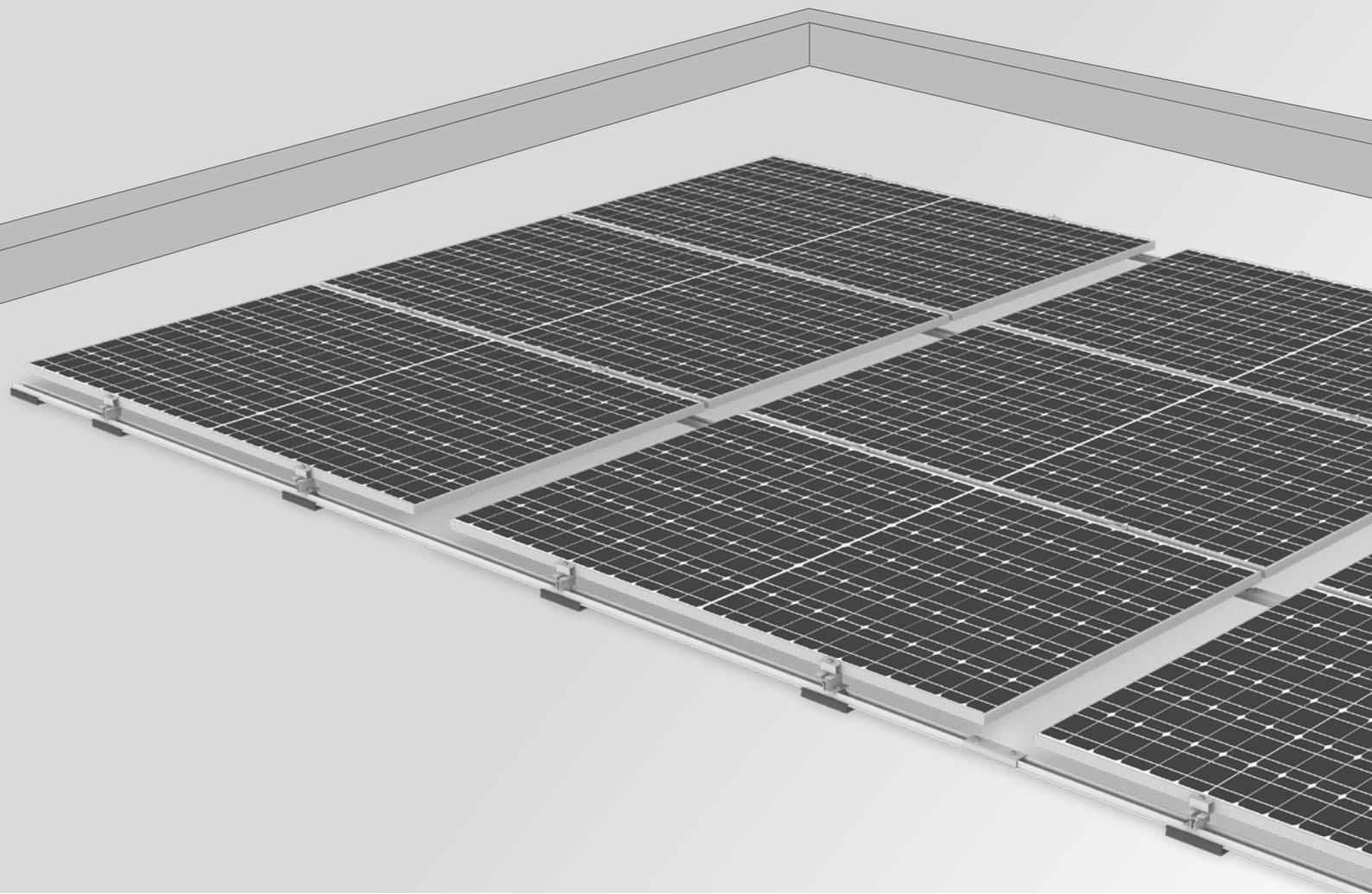




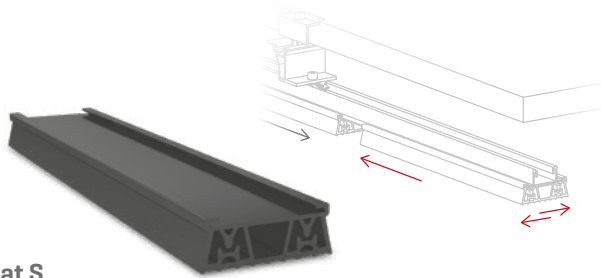
# Dome Zero System



- / Roof-parallel mounting system for flat roofs with Dome 6 components
- / Suitable for roof pitches up to  $10^\circ$  with typical flat roof coverings
- / Placement in portrait orientation of modules
- / Very flat installation height - concealment behind a parapet is possible



## Components



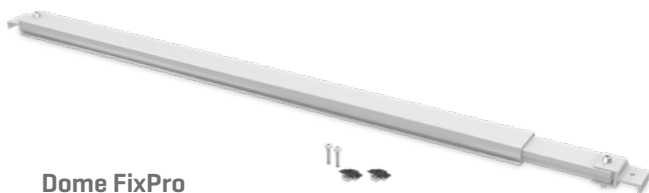
### Mat S

- / Shear soft Mat S made of EPDM
- / Absorbs and compensates tolerances
- / High coefficients of friction reduce ballast



### Dome Zero Peak

- / Modules are fixed at the quarter point of the long module side
- / Use of large modules possible



### Dome FixPro

- / Fixed connection for roofs with inclination  $< 10^\circ$
- / Required for roof pitches  $\geq 3^\circ$
- / Recommended for roofs with low load reserves



### Dome Speed Spacer

- / Simple alignment of the rails on the roof with the help of the flexible spacing gauge
- / Simply adjust module width and set up rail spacing
- / Suitable for all K2 flat roof systems

## Technical data

	Dome Zero
<b>Scope of application</b>	Flat roofs $< 10^\circ$ with foil or bitumen covering, on concrete, gravel roofs
<b>Fastening type/roof fixture</b>	<ul style="list-style-type: none"> <li>• Ballasted and no roof penetration: <math>\leq 3^\circ</math>.</li> <li>• With fixed connection Dome FixPro: <math>&gt; 3^\circ</math></li> </ul>
<b>Requirements</b>	<ul style="list-style-type: none"> <li>• Permissible module dimensions (L×W×H): 1640-2390 × 950-1305 × 30-50mm</li> <li>• Minimum system size: 2 modules</li> </ul>
<b>Thermal separation</b>	max. 12m in rail direction   max. 16m in transverse direction
<b>Minimum distance to the roof edge</b>	600 mm
<b>Inclination angle</b>	$0^\circ$
<b>Material</b>	<ul style="list-style-type: none"> <li>• Peak, Mounting Rail, FlatConnector-Set, SpeedPorter, Porter, MiniClamps: Aluminium EN AW-6063 T66, EN AW-6082 T6, EN AW-5754</li> <li>• Mat S protective mat: EPDM</li> <li>• Small parts: Stainless steel [1.4301] A2-70</li> </ul>

