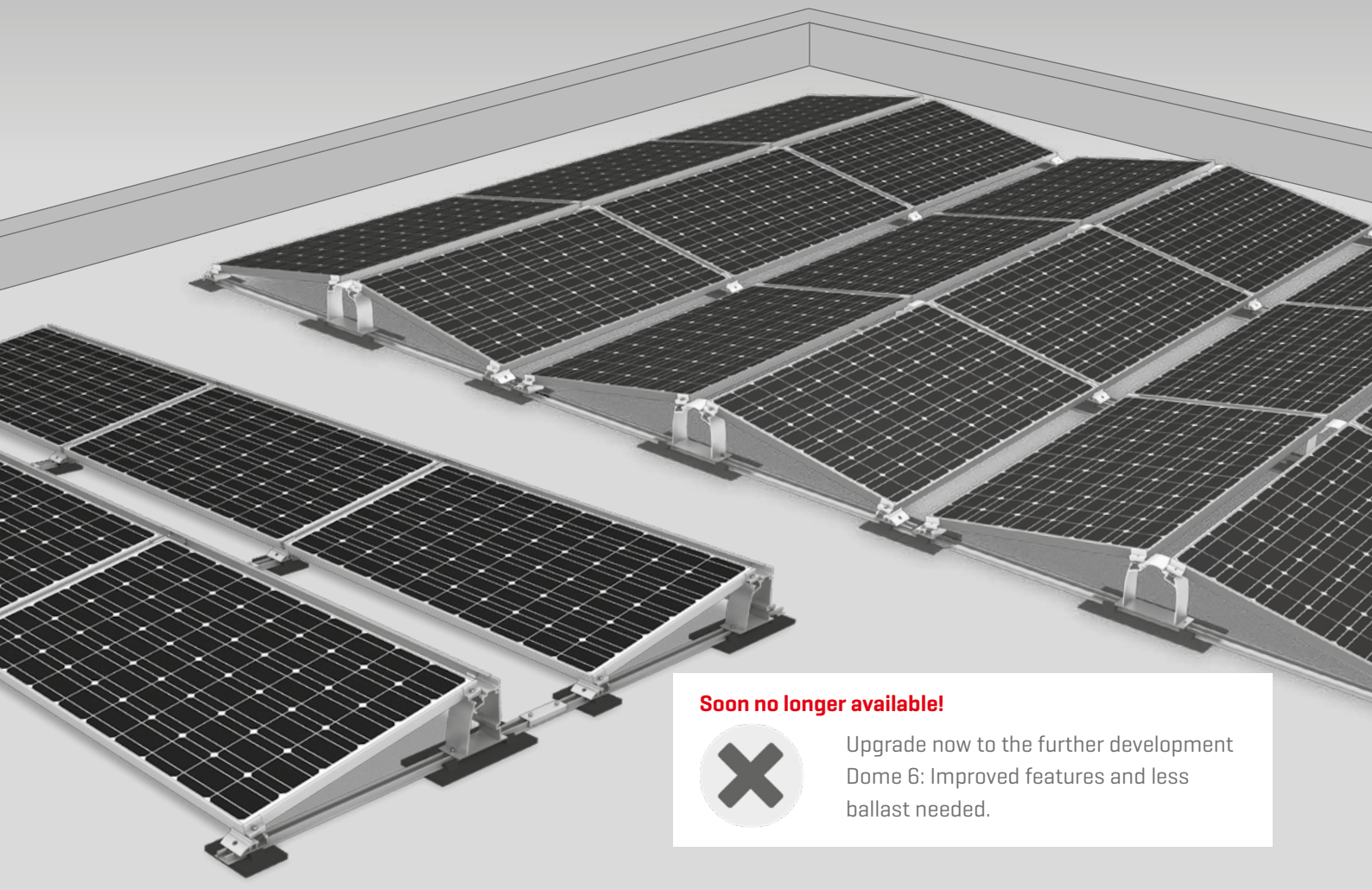




# Dome Classic System



**Soon no longer available!**



Upgrade now to the further development Dome 6: Improved features and less ballast needed.

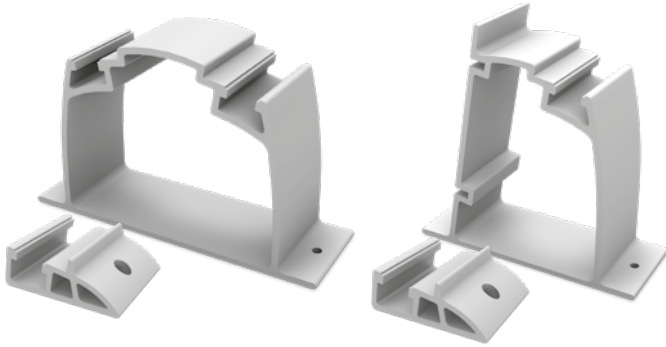
/ A system for statically difficult roofs and special applications

/ Can also be mounted on trapezoidal sheet metal roofs

/ Quick and easy handling



## Components



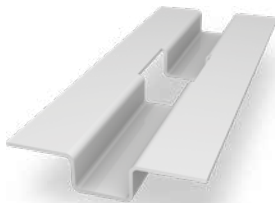
### Dome S1000 and Dome SD

Module support elements for one-sided and two-sided elevations



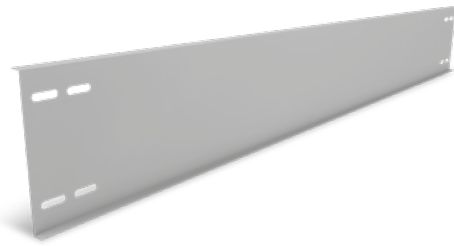
### SpeedRail with building protection mats

Laminated or unlaminated building protection mats, depending on roof covering material



### Ballast Management

SpeedPorter: For quick and easy ballasting



### Windbreaker for S-Dome elevation

- / Wind deflection on the rear of Dome systems
- / Various lengths available

## Technical data

	D-Dome Classic	S-Dome Classic
<b>Scope of application</b>	Flat roofs $\leq 5^\circ$ with single ply membrane or bituminous roof covering, also on concrete, gravelled or green roofs; also trapezoidal sheet metal roofs with continuous mounting rails	
<b>Fastening type/roof fixture</b>	Ballasted; no roof penetration for inclination $\leq 3^\circ$	
<b>Requirements</b>	<ul style="list-style-type: none"> <li>• Permissible module dimensions [L × W × H]: 1386 - 2300 × 950 - 1100 × 30 - 50 mm</li> <li>• Minimum system size: 2 supports (4 modules)</li> <li>• Module approved for corner clamping [see <a href="http://k2-systems.com/en/approved-modules">k2-systems.com/en/approved-modules</a>]</li> </ul>	<ul style="list-style-type: none"> <li>• Permissible module dimensions [L × W × H]: 1386 - 2067 × 950 - 1100 × 30 - 50 mm</li> <li>• Minimum system size: 2 modules</li> </ul>
<b>Technical specifications</b>	<ul style="list-style-type: none"> <li>• Thermal separation after max. 12 m [trapezoidal sheet metal 8.7 m]</li> <li>• Minimum clearance to roof edge 600 mm</li> </ul>	
<b>Inclination angle</b>	10°	
<b>Material</b>	<ul style="list-style-type: none"> <li>• Mounting rails, D-/S-Dome, Dome SD, Windbreaker, module clamps, rail connectors: Aluminium EN AW-6063 T66</li> <li>• Building protection mat with or without aluminium lining [PUR-bound rubber granules]</li> <li>• Windbreaker: Steel with Magnelis coating</li> <li>• Small parts: Stainless steel [1.4301] A2-70</li> </ul>	

